

Teléfonos Fanvil - Actualización luz pantalla

Material necesario

1. Equipo portátil
2. Injector o Switch PoE
3. 2 cables de red RJ45

Preparación del equipo

En equipos Windows:

1. Configuramos la IP del equipo:



Network 3
Connected



DIRECT-9a-HP M254 LaserJet



SALLESHOTELS



DIRECT-B8-HP OfficeJet Pro 7740



Hidden Network

Network & Internet settings

Change settings, such as making a connection metered.



Wi-Fi



Airplane mode



Mobile
hotspot



3:32 PM
2/13/2023



Settings

Home

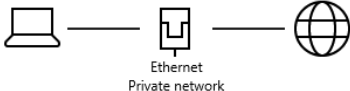
Find a setting

Network & Internet

- Status
- Wi-Fi
- Ethernet
- Dial-up
- VPN
- Airplane mode
- Mobile hotspot
- Proxy

Status

Network status



Ethernet
Private network

You're connected to the Internet

If you have a limited data plan, you can make this network a metered connection or change other properties.

Ethernet 6.7 GB
From the last 30 days

Properties Data usage

Show available networks
View the connection options around you.

Advanced network settings

- Change adapter options
View network adapters and change connection settings.
- Network and Sharing Center
For the networks you connect to, decide what you want to share.
- Network troubleshooter
Diagnose and fix network problems.

[View hardware and connection properties](#)

[Windows Firewall](#)

[Network reset](#)

Help from the web

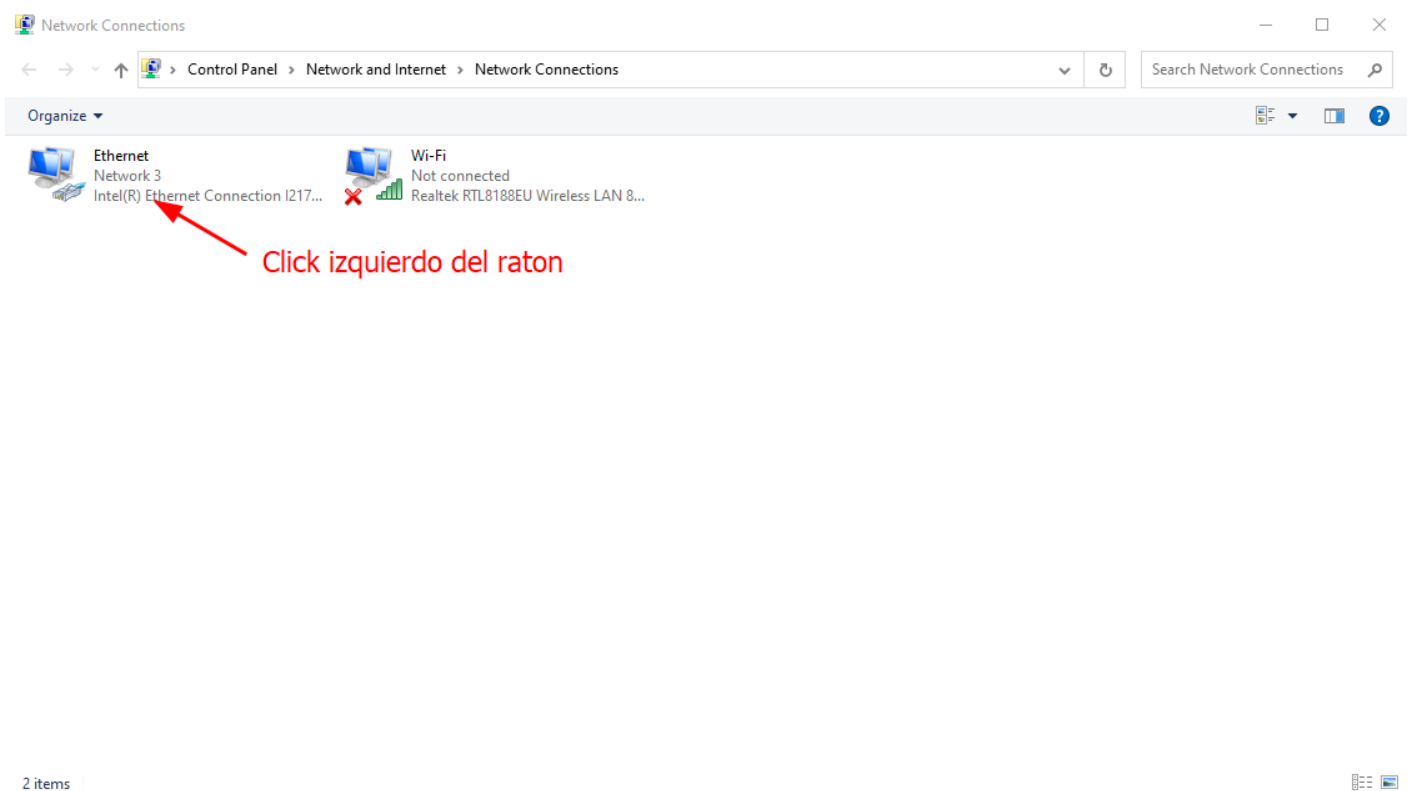
- [Updating network adapter or driver](#)
- [Finding my IP address](#)
- [Get help](#)
- [Give feedback](#)

Network Connections

Control Panel > Network and Internet > Network Connections

Search Network Connections

Organize

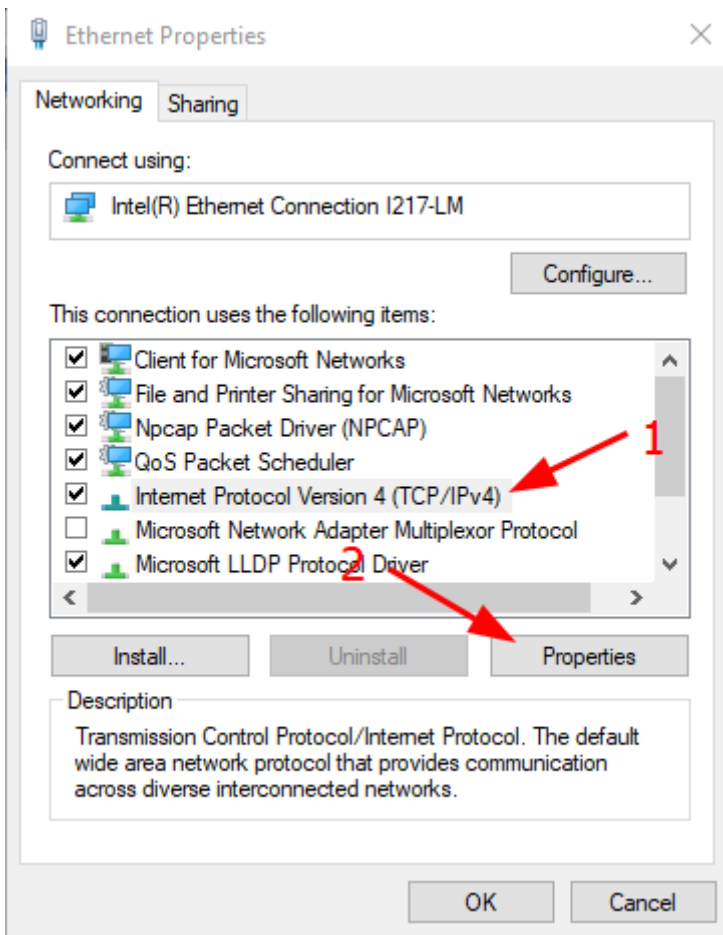
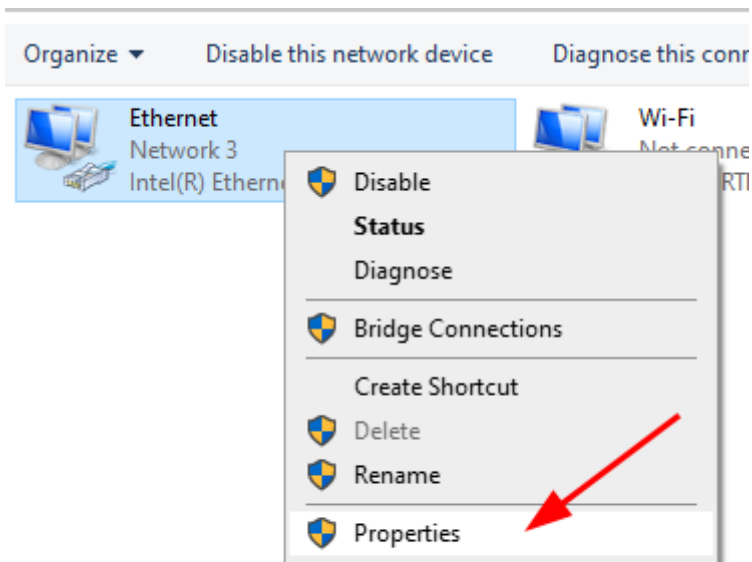


Ethernet Network 3
Intel(R) Ethernet Connection I217...

Wi-Fi Not connected
Realtek RTL8188EU Wireless LAN 8...

Click izquierdo del raton

2 items



General

You can get IP settings assigned automatically if your network supports this capability. Otherwise, you need to ask your network administrator for the appropriate IP settings.

☐ Obtain an IP address automatically

☒ Use the following IP address:

IP address: 192 . 168 . 10 . 10

Subnet mask: 255 . 255 . 255 . 0

Default gateway: 192 . 168 . 10 . 1

☐ Obtain DNS server address automatically

☒ Use the following DNS server addresses:

Preferred DNS server: . . .

Alternate DNS server: . . .

☐ Validate settings upon exit

Advanced...

OK Cancel

Networking Sharing

Connect using:

Intel(R) Ethernet Connection I217-LM

Configure...

This connection uses the following items:

- ☒ Client for Microsoft Networks
- ☒ File and Printer Sharing for Microsoft Networks
- ☒ Npcap Packet Driver (NPCAP)
- ☒ QoS Packet Scheduler
- ☒ Internet Protocol Version 4 (TCP/IPv4)
- ☐ Microsoft Network Adapter Multiplexor Protocol
- ☒ Microsoft LLDP Protocol Driver

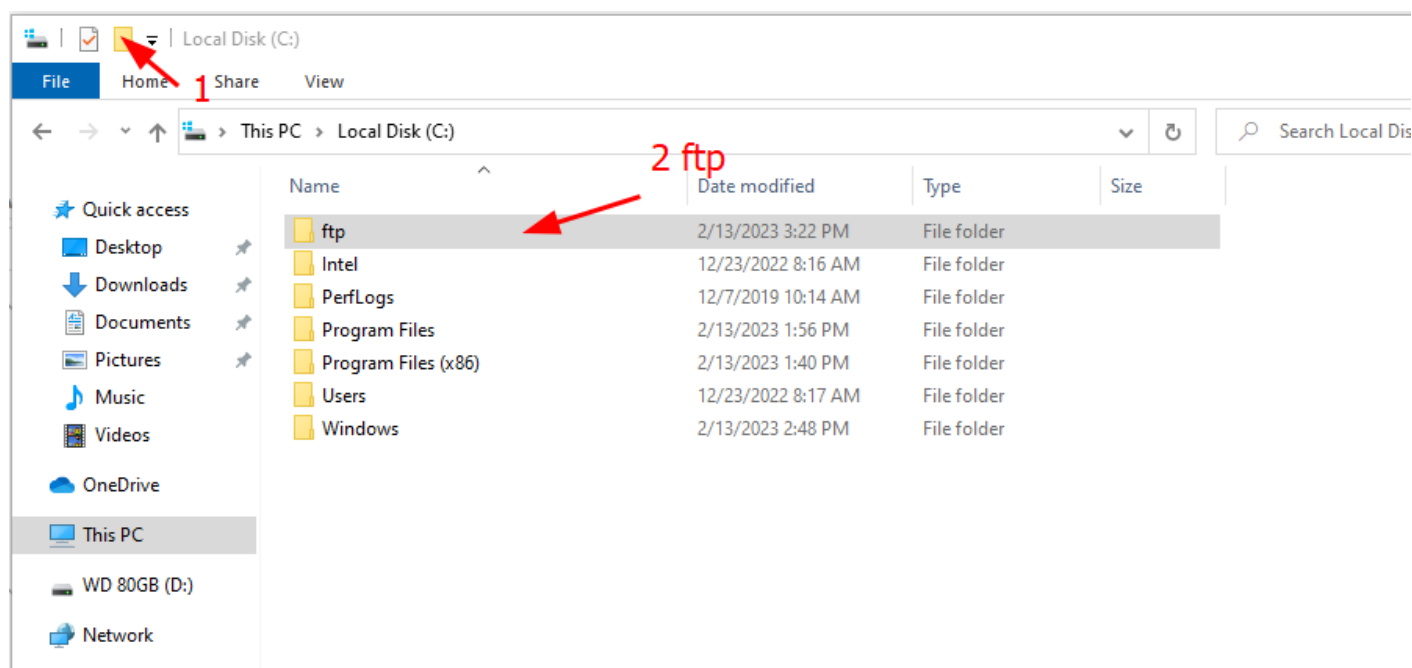
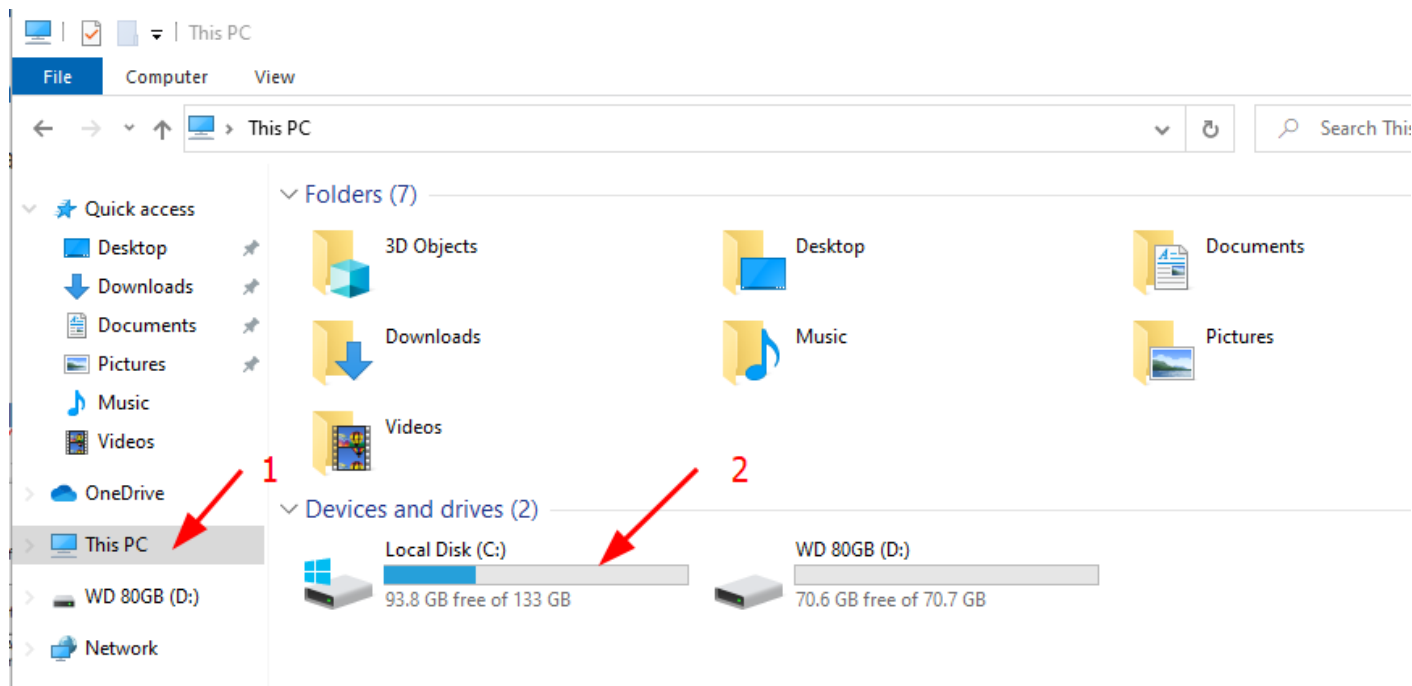
Install... Uninstall Properties

Description

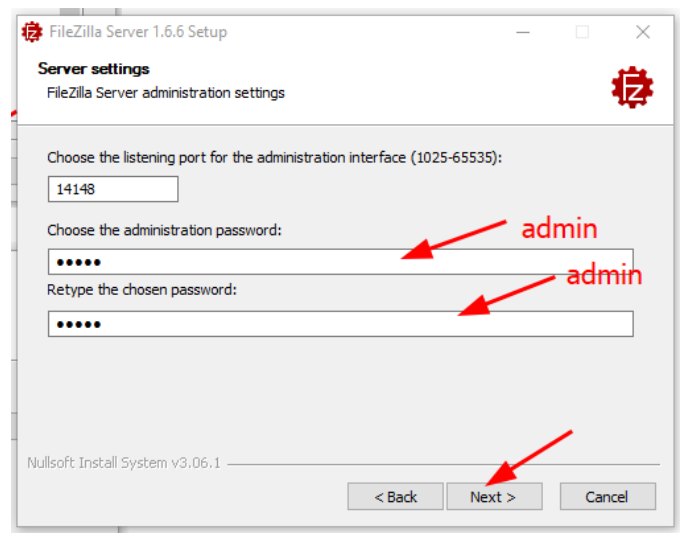
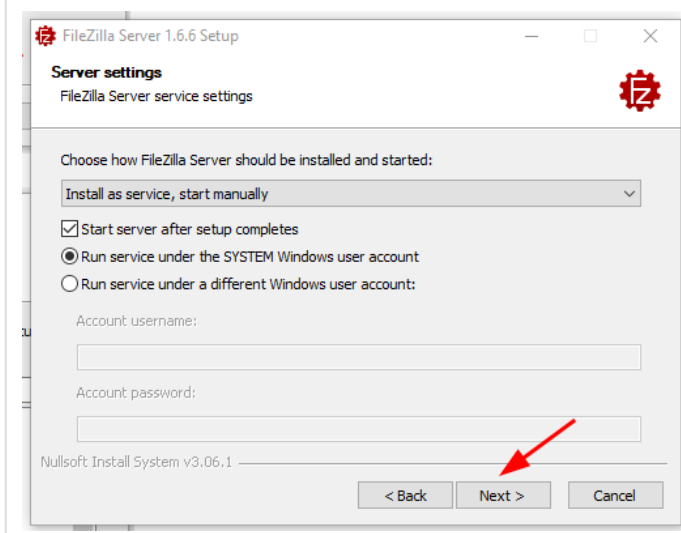
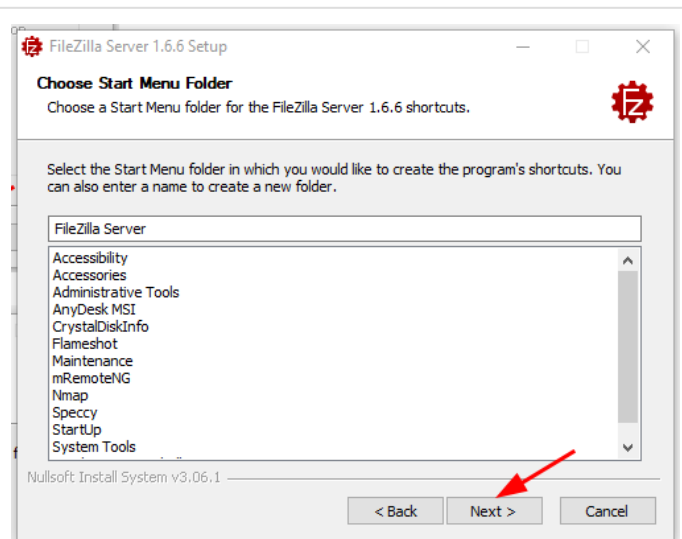
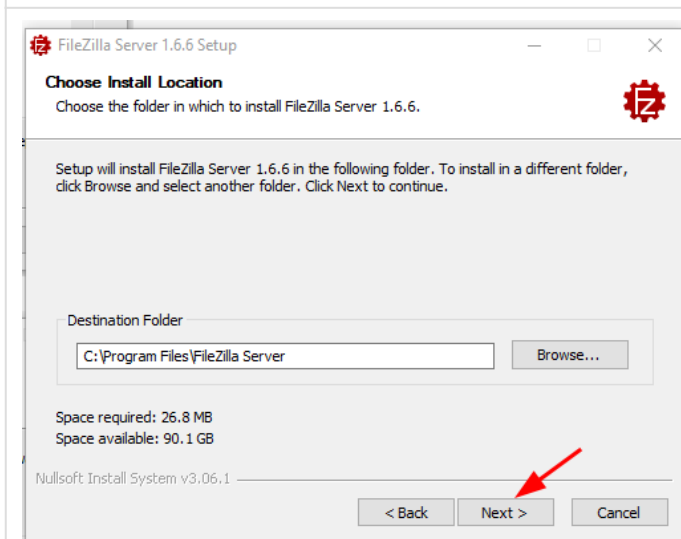
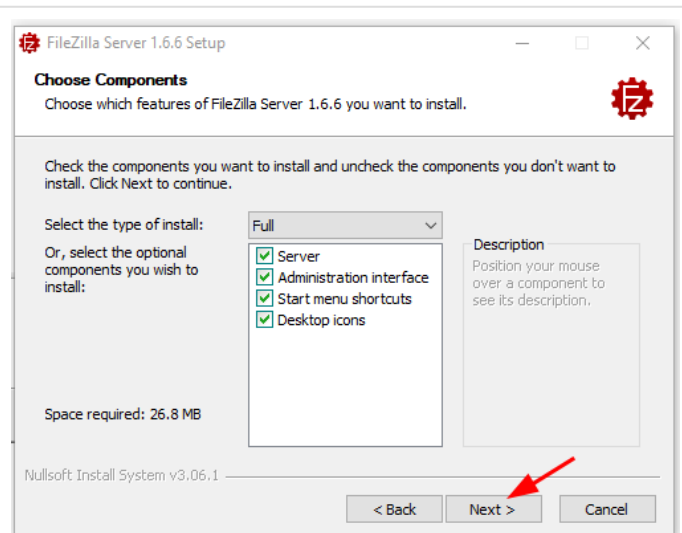
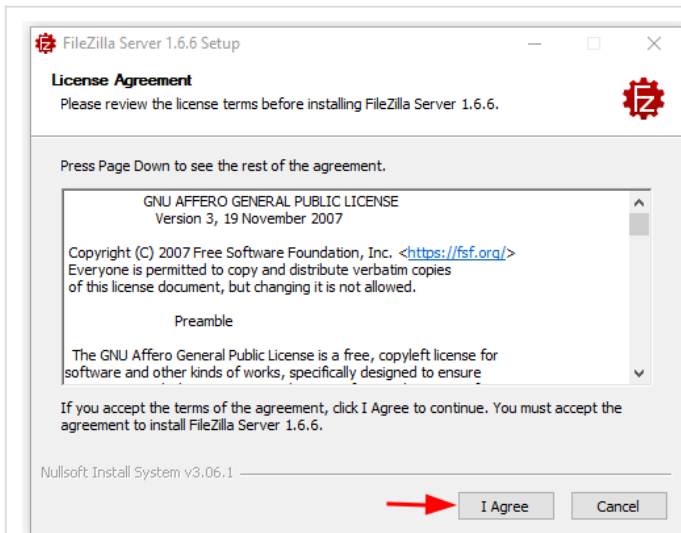
Transmission Control Protocol/Internet Protocol. The default wide area network protocol that provides communication across diverse interconnected networks.

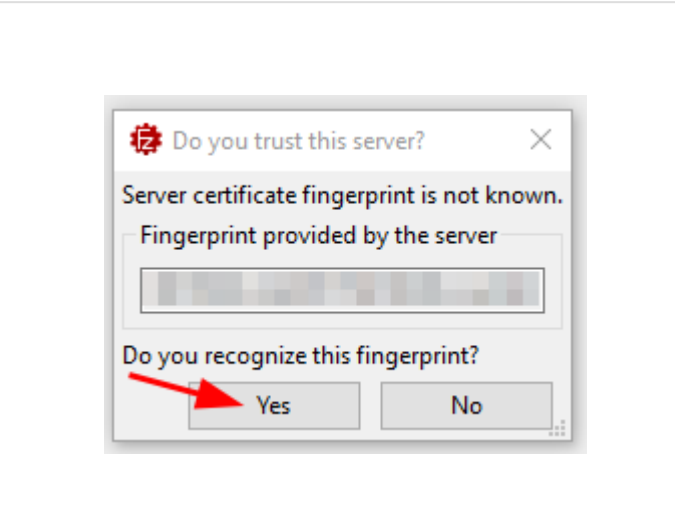
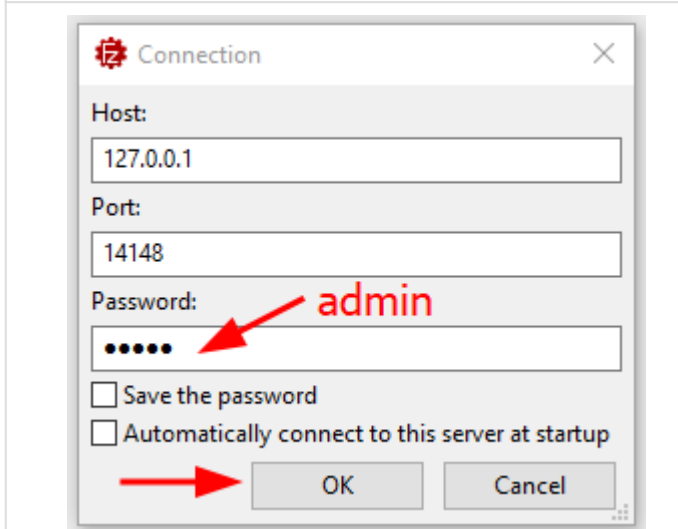
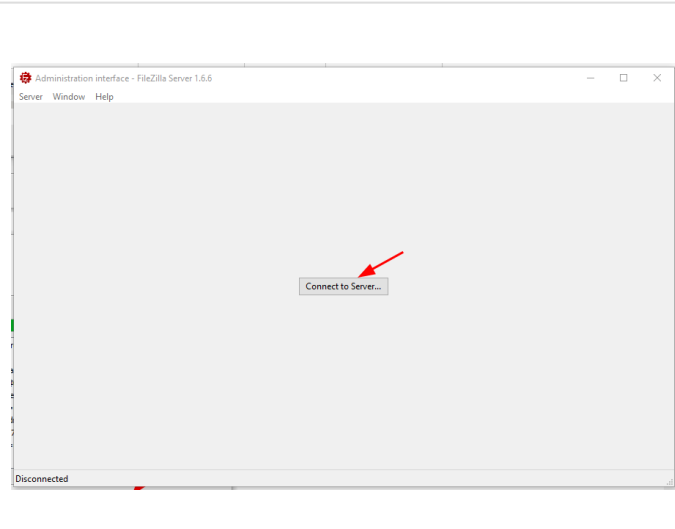
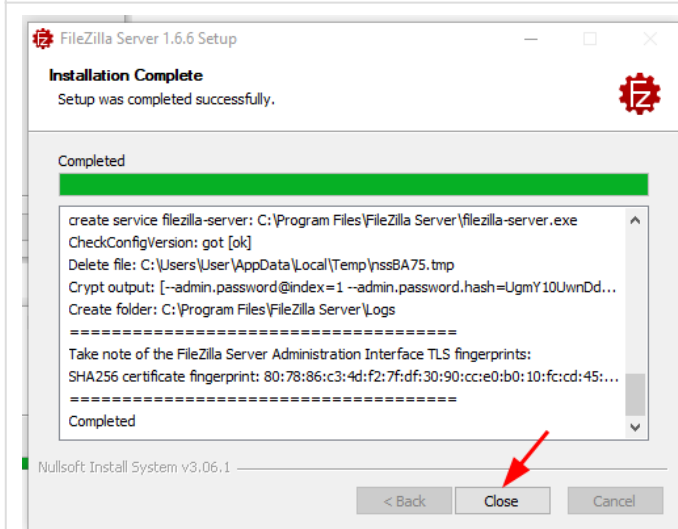
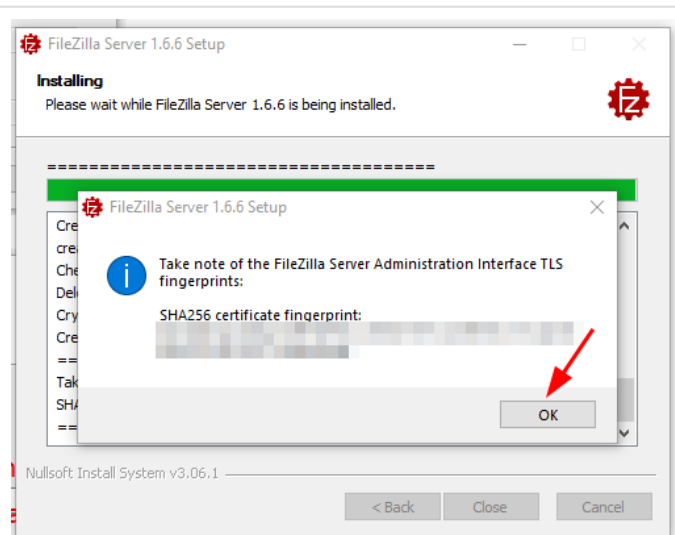
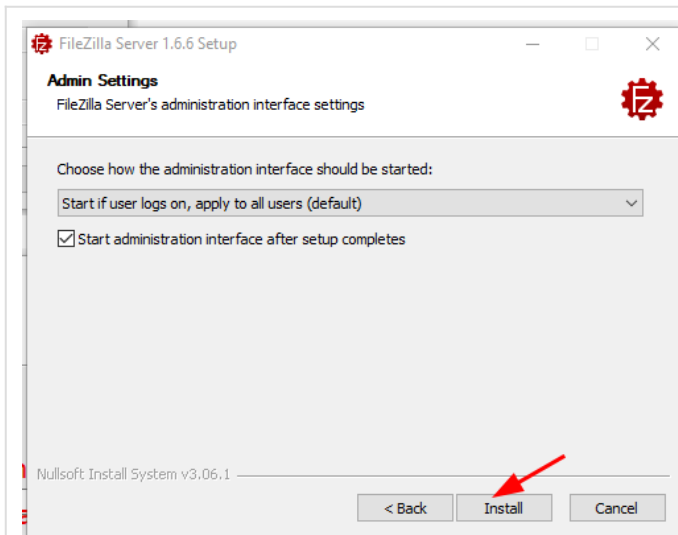
OK Cancel

2. Creamos la ruta donde pondremos el archivo de configuración de los teléfonos:



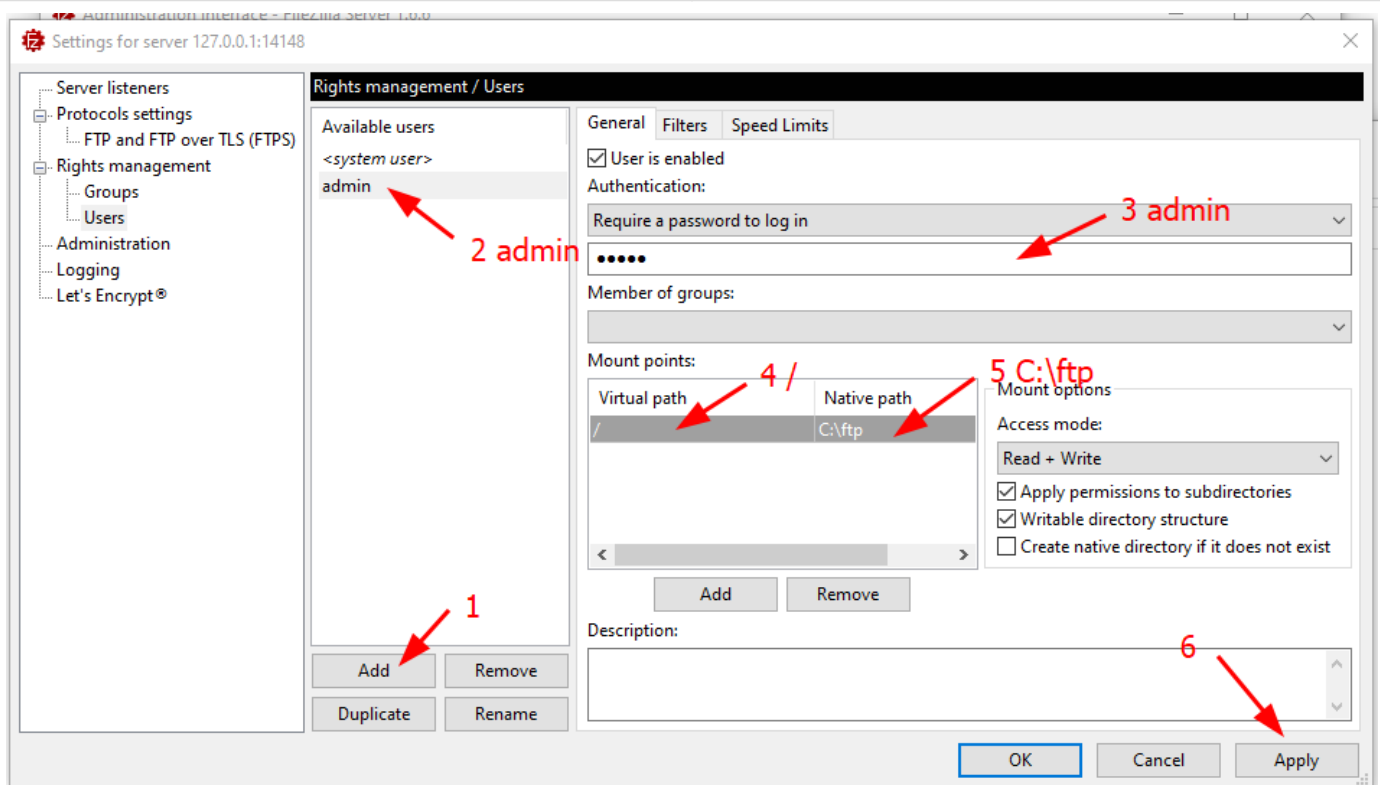
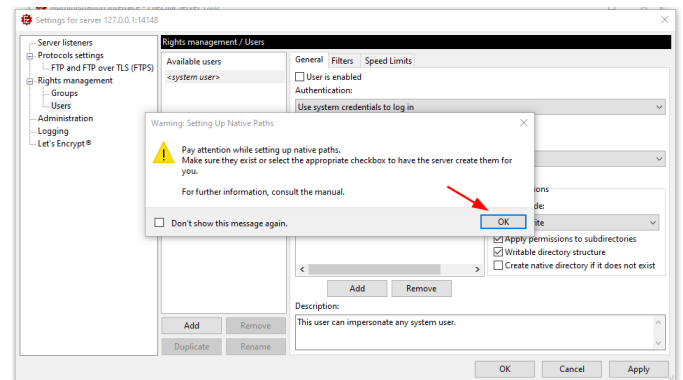
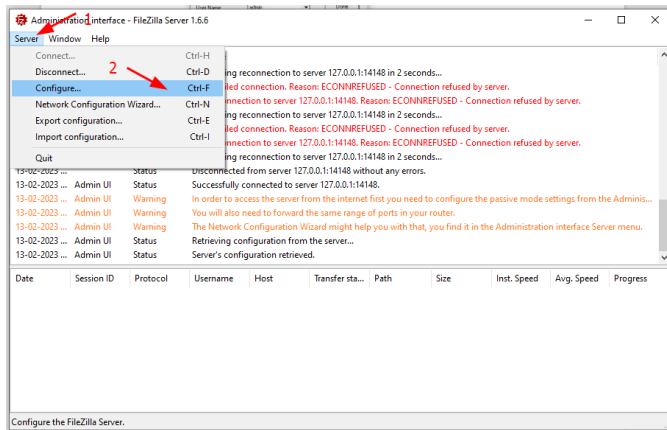
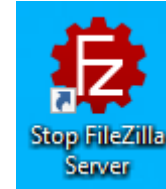
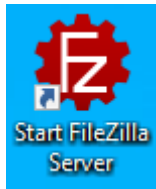
3. Descargamos **Filezilla Server** y lo configuramos (Click en link azul para descargar):





Atención si os sales un mensaje como el de la imagen de abajo, significa que el servidor esta parado. Esto puede ocurrir en caso de que apaguemos e iniciemos la maquina. Hay que iniciar el servidor de nuevo, en el escritorio tenéis los iconos de Start/Stop como los de las imágenes consecutivas.

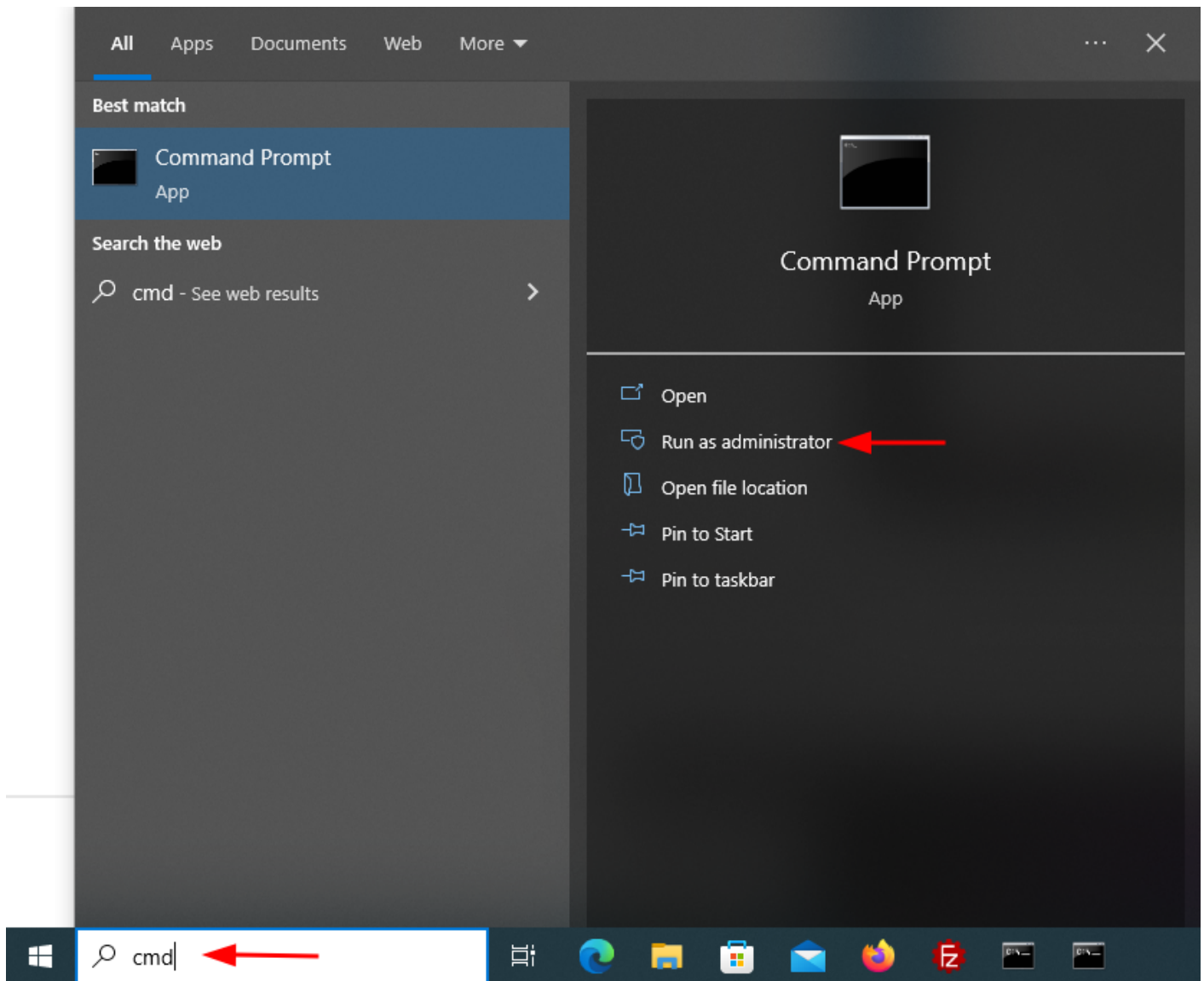
13-02-2023 ...	Admin UI	Error	Client failed connection. Reason: ECONNREFUSED - Connection refused by server.
13-02-2023 ...	Admin UI	Error	Failed connection to server 127.0.0.1:14148. Reason: ECONNREFUSED - Connection refused by server.
13-02-2023 ...	Admin UI	Status	Attempting reconnection to server 127.0.0.1:14148 in 2 seconds...



4. Habilitar cliente Telnet para Windows

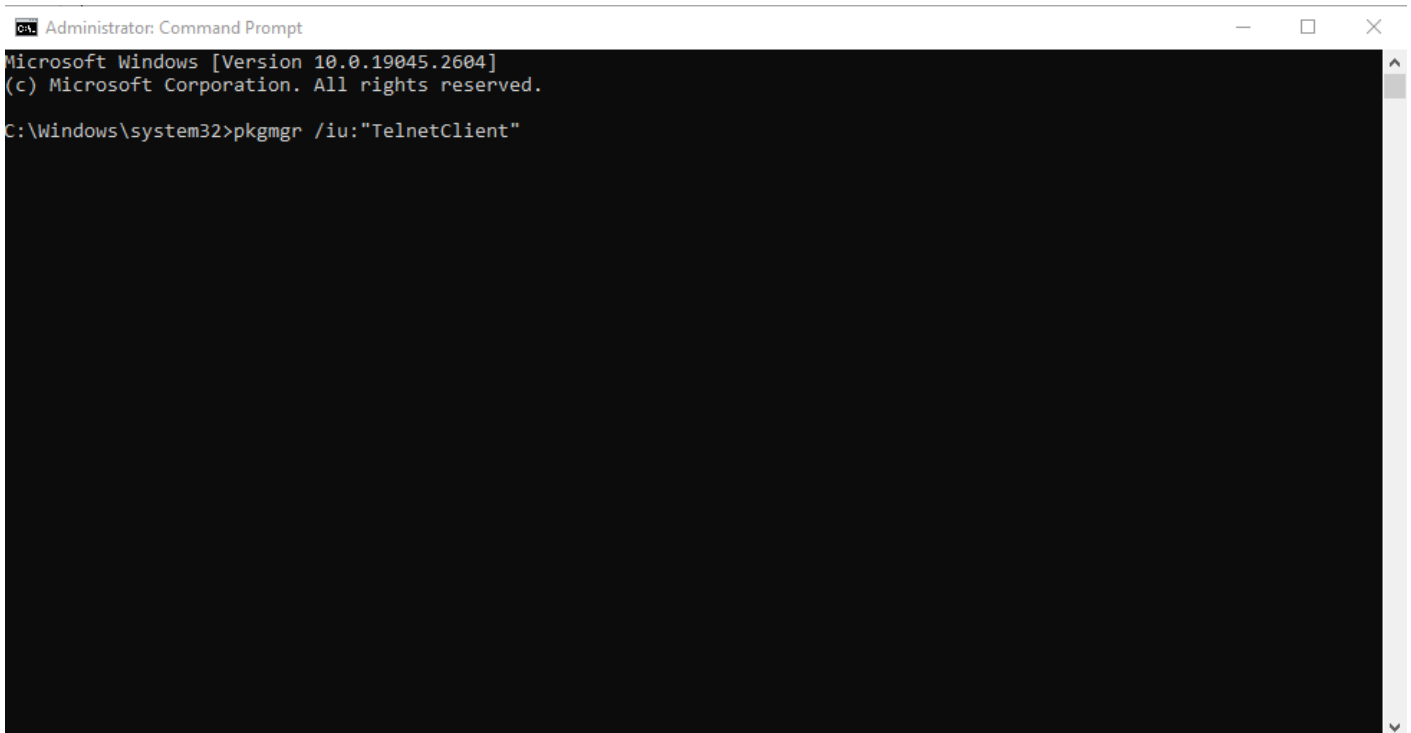
4.1. En la caja de búsqueda de la barra de herramientas introducimos y buscamos "cmd".

4.2. Elegimos la opción de "Abrir como Administrador"



4.3. Una vez abierto el terminal introducimos o copiamos el siguiente texto y pulsamos Enter:

- **pkgmgr /iu:"TelnetClient"**

A screenshot of a Windows Command Prompt window titled "Administrator: Command Prompt". The window has a black background with white text. The text displayed is: "Microsoft Windows [Version 10.0.19045.2604]" followed by "(c) Microsoft Corporation. All rights reserved." on the next line. The command prompt shows the path "C:\Windows\system32>" followed by the command "pkgmgr /iu:"TelnetClient"". The cursor is at the end of the command.

```
Administrator: Command Prompt
Microsoft Windows [Version 10.0.19045.2604]
(c) Microsoft Corporation. All rights reserved.
C:\Windows\system32>pkgmgr /iu:"TelnetClient"
```

Una vez instalado nos pedira reiniciar

5. Conectar con el teléfono

Primero debemos quitar la corriente al teléfono y volver-la a poner una vez se haya apagado. Durante el proceso de arranque mantendremos pulsada la tecla "#". El teléfono entrara mostrara una interfaz negra con la palabra "POST MODE" escrita.

A continuación conectaremos el cable RJ45 al puerto de **Red** del teléfono con el equipo portátil.

Debemos asegurarnos de haber cumplido el Paso 1, o repetirlo antes de proceder.

Revision #8

Created 13 February 2023 09:59:30

Updated 28 February 2023 11:32:15